



**HARVARD
Developments**

— A HILL COMPANY —



2012-12th Avenue | Regina, SK

The modern and vibrant Century Plaza is an 86,000 square foot high-end Class “B” office building centrally located in downtown Regina. Century Plaza was completely renovated in 2006 to feature all new glazing, roofing, heating, cooling, ventilation, electrical, and fire and safety, and is now home to Central Services, Harvard Media, and Scotiabank. In 2009, Century Plaza was awarded the Earth Award, sponsored by the Building Owners and Managers Association, Regina Chapter and SaskEnergy, for achieving BOMA BEST Level 3 certification.

Chantal Blaisdell

Leasing Manager

306.777.0641

cblaisdell@harvard.ca

Features

OPS/CAM/PTAX

\$15.97 PSF

Total Leasable Square Footage

86,000 SF

Underground Parking

90 Stalls

LEED® Silver

Public Transit

Within walking distance

Professionally Managed By

Harvard Property Management

Underground

Secured bike storage

Class

Class B



On-site Showers



Locker Room

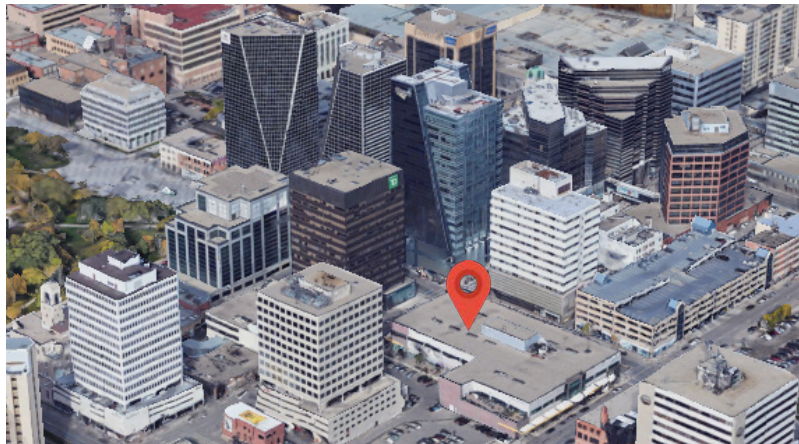


Tenant Signage
Opportunity on Hamilton St.



Location

Century Plaza is located in the heart of downtown Regina, at the corner of Hamilton Street and 12th Avenue. Conveniently situated amongst the thriving downtown community. Nearby businesses include Casino Regina, the Globe Theatre, Kendi Boutique, Colin O'Brian Man's Shoppe, and the Regina Public Library.



RESTAURANTS WITHIN 1KM

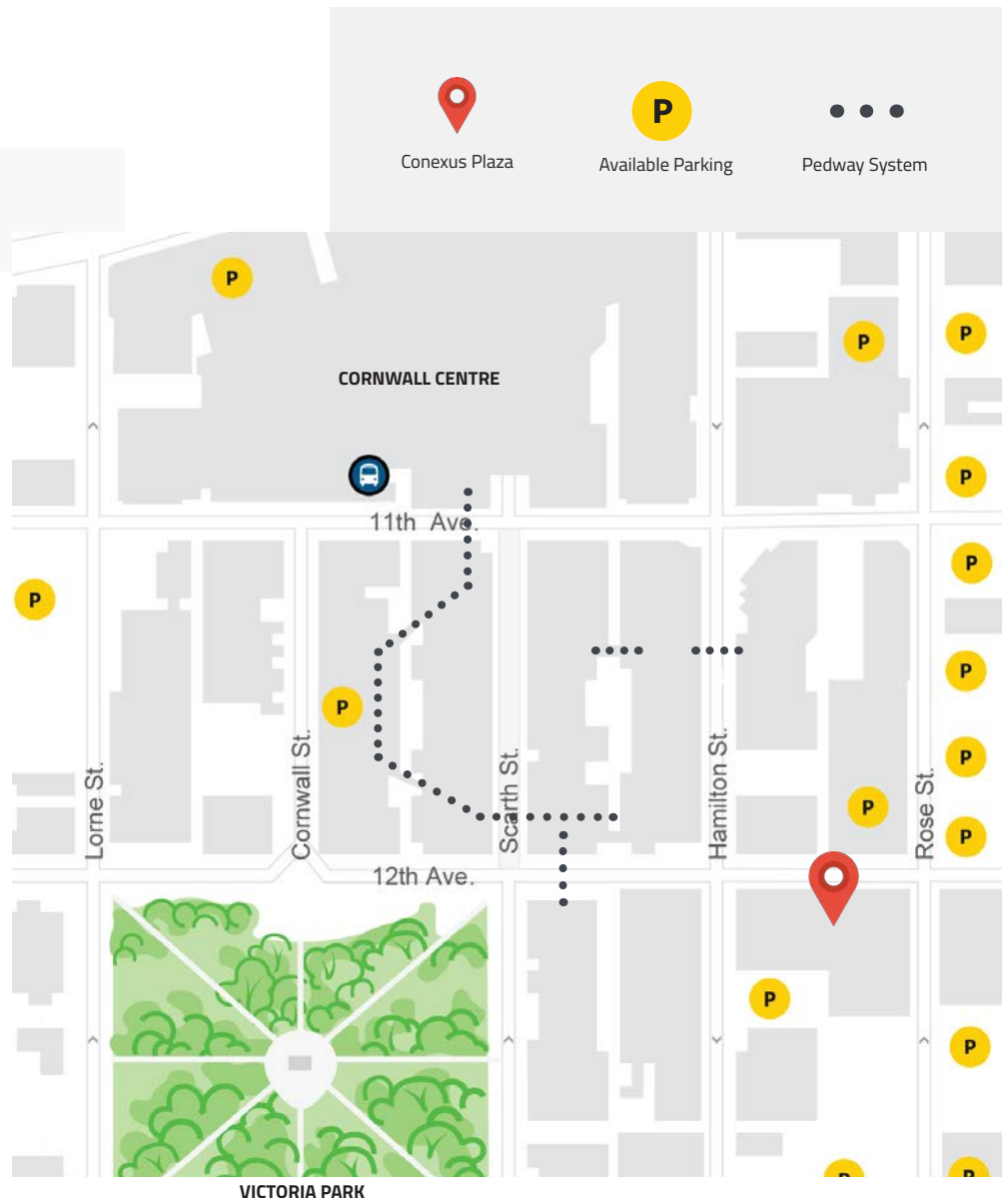
- Green Spot Cafe
- Famoso Neopolitan Pizzeria
- Bone & Broth
- Lancaster Taphouse
- Canada Life Cafeteria
- Avenue

HOTELS WITHIN 1KM

- Hotel Saskatchewan
- Ramada Plaza Regina
- DoubleTree by Hilton
- Delta Regina

WELLNESS WITHIN 1KM

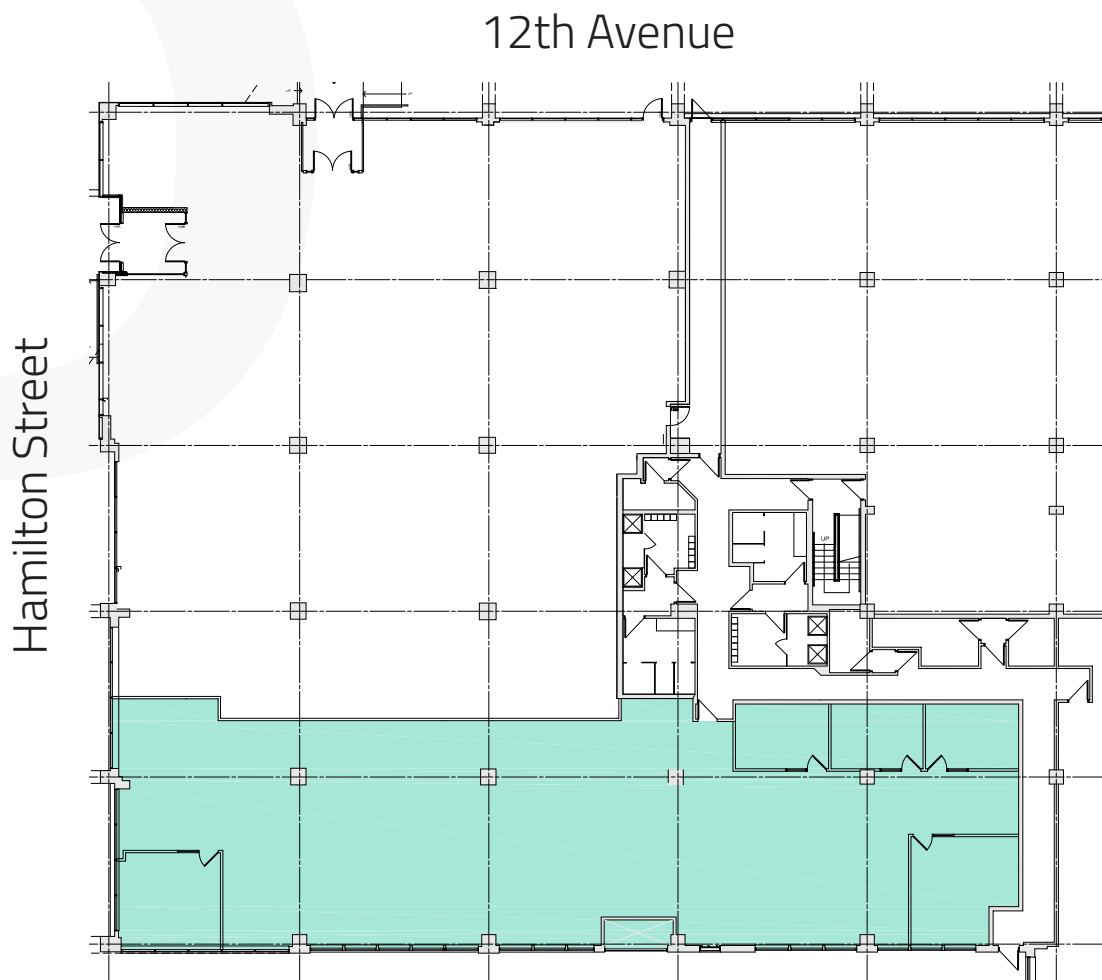
- Yoga Mala
- The Nest Health Centre
- Evolution Fitness
- Mettle Performance Training



Availability

Suite **SF** **Notes**

1915	5,485	Spacious, open-plan main floor office space with 5 built-out offices. Plenty of natural light from large windows. Convenient access to main floor washrooms, showers, and underground parking. 4 heated underground parking stalls available, at market rates.
-------------	--------------	--



CURRENT TENANTS

